

# AB 617 All Community Steering Committee (CSC) Onboarding Workshop

## *AB 617 Taller de incorporación del Comité Directivo de Toda la Comunidad (CSC)*

September 26, 2024 / *26 de septiembre del 2024*

5:30 PM – 6:30 PM



# Land & Labor Acknowledgment

On behalf of the Diversity, Equity, And Inclusion with Community Air Programs (DEI with CAP) division of South Coast AQMD, we acknowledge that we are on the ancestral land of the Gabrielino/Tongva people. We also honor the labor of the people who have and do reside here and their efforts to foster a healthier environment and enhance the quality of life for all residents and community stakeholders.

# Language Justice

## Anuncio de la Justicia de Lenguaje

### **SLOW DOWN**

Facilitators, presenters, trainers, participants... anyone speaking during the event, **speak at a moderate pace**. **Take a breath** after each sentence, **take a pause** after switching speakers and asking questions. Slowing down supports **EVERYONE**, not just interpreters.

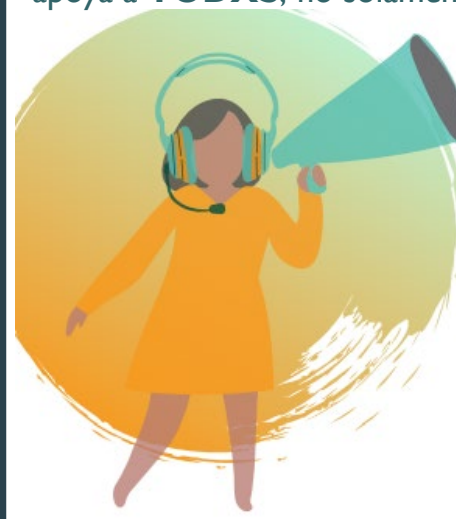


### **SPEAK-UP**

Speak loud and clear! Ideally, **using headphones with a mic**. Interpreters need to be able to hear the speaker over the sound of their own voice when doing simultaneous interpretation.

### **HABLAR DESPACIO**

Facilitadorxs, talleristas, presentadorxs, participantes... Cualquier persona que participe durante el evento, hable a un ritmo más lento. **Respire** al terminar cada frase, **pause brevemente** al hacer una pregunta o cuando le pase la palabra a alguien más. Hablar más despacio apoya a **TODXS**, no solamente a lxs intérpretes.



### **HABLAR EN VOZ ALTA**

¡Hable claramente y en voz alta! Use audífonos con micrófono si es posible. Lxs intérpretes tienen que poder escucharle sobre el sonido de su propia voz cuando están haciendo interpretación simultánea.

# Language Justice (continued)

## Anuncio de la Justicia de Lenguaje (continuado)

### SAY YOUR NAME EACH TIME YOU SPEAK

Folks listening to the interpretation might only hear the interpreters voice, so they will not notice when a new person is speaking.



### DECIR SU NOMBRE CADA VEZ QUE PARTICIPE

Es posible que las personas que están escuchando la interpretación solo escuchan a lxs intérpretes, así que no saben en que momento cambio la persona que esta hablando.



### ONE PERSON AT A TIME

Interpreters can only interpret for **one person at a time**, and they don't want to be put in the position of having to decide which voice to privilege over another.



### UNA PERSONA A LA VEZ

Lxs intérpretes solamente pueden interpretar por una persona a la vez, y no quieren estar en la posición de tener que dar privilegio a una persona sobre otra.

### LANGUAGE IS NOT A BARRIER

To the contrary, when we have multiple languages in a space, **we have multiple cosmovisions**, and multiple ways of understanding the world. We have the opportunity to expand and deepen our perspective, our imaginations, the possible strategies, tactics, and visions for what is possible.



### EL LENGUAJE NO ES UNA BARRERA

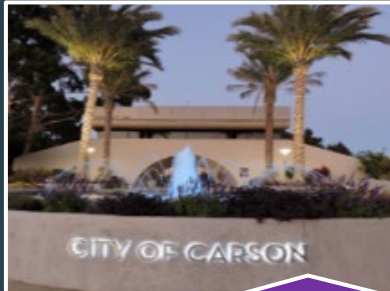
Es todo lo contrario. Cuando hay múltiples idiomas en un espacio, hay **múltiples cosmovisiones** y varias maneras de entender el mundo. Nos da la oportunidad para expandir y profundizar nuestra perspectiva, nuestras imaginations, las posibles estrategias y tácticas, y nuestra visión de los que es posible.





# Welcome & Introductions

# South Coast AQMD AB 617 Communities



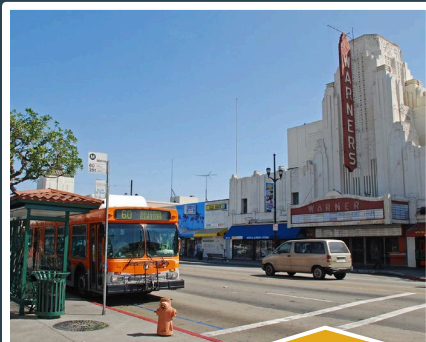
**Wilmington, Carson,  
West Long Beach  
Year 1 (2018)**



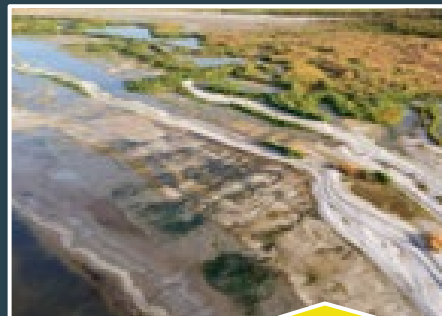
**East Los Angeles, Boyle Heights,  
West Commerce  
Year 1 (2018)**



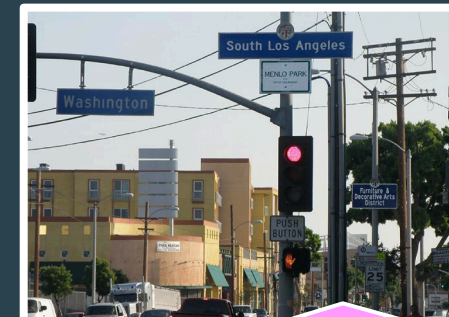
**San Bernardino,  
Muscoy  
Year 1 (2018)**



**Southeast  
Los Angeles  
Year 2 (2019)**



**Eastern  
Coachella Valley  
Year 2 (2019)**



**South  
Los Angeles  
Year 3 (2020)**

# CSC Members



**Name**

**Community Steering Committee**

**Representative Category:**  
Resident, Community Organization,  
Business, Agency, Elected Official

**Why did you join the CSC?**

# AB 617 Staff

- ▶ Name
- ▶ Division
- ▶ Responsibility



Diversity, Equity, Inclusion with Community Air Program (DEI+CAP) Leadership







# AB 617 Overview

# Who is South Coast Air Quality Management District (South Coast AQMD)?



## Regional air pollution control agency in California

- Responsible for cleaning the air and protecting the health of its residents
- Encompasses Orange county and large portions of Los Angeles, Riverside, and San Bernardino counties
- Approximately 17 million people

## Primary responsibilities

- Develop Air Quality Management Plan to meet federal and state air quality standards
- Control emissions from stationary sources, through adoption of air quality rules
- Regulate over 27,000 facilities
- Respond to air quality complaints
- Monitor air quality

# AB 617 ORGANIZATION CHART

▶ South Coast AQMD

▶ Diversity, Equity, & Inclusion w/ Community Air Programs

Diversity, Equity & Inclusion (DEI)

Community Air Programs



**CERP Team**

Community Emissions  
Reduction Plan

**CORE Team**

Community Outreach,  
Relations, Engagement



# Overview of Assembly Bill 617 (AB 617)

- Signed into California law on July 26, 2017 (California Health and Safety Code § 44391.2)
- Invests resources and focuses on localized actions to reduce air pollution in environmental justice communities
- Community Steering Committee (CSC) identifies air quality priorities and develops goals and objectives to reduce emissions of and exposure to air pollution
- Purposeful and ongoing involvement of community members towards the community's emission reductions goals



**Community Emission Reductions Plan (CERP) and Community Air Monitoring Plan (CAMP)**



**Clean Technology Investments**



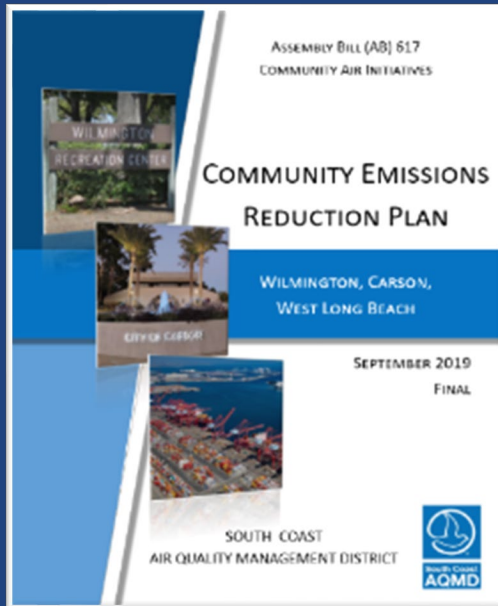
**Rules Requiring Best Available Retrofit Control Technology (BARCT)**



**Easier Access to Emissions Data**

# What is a CERP?

## Community Emissions Reduction Plan (CERP)



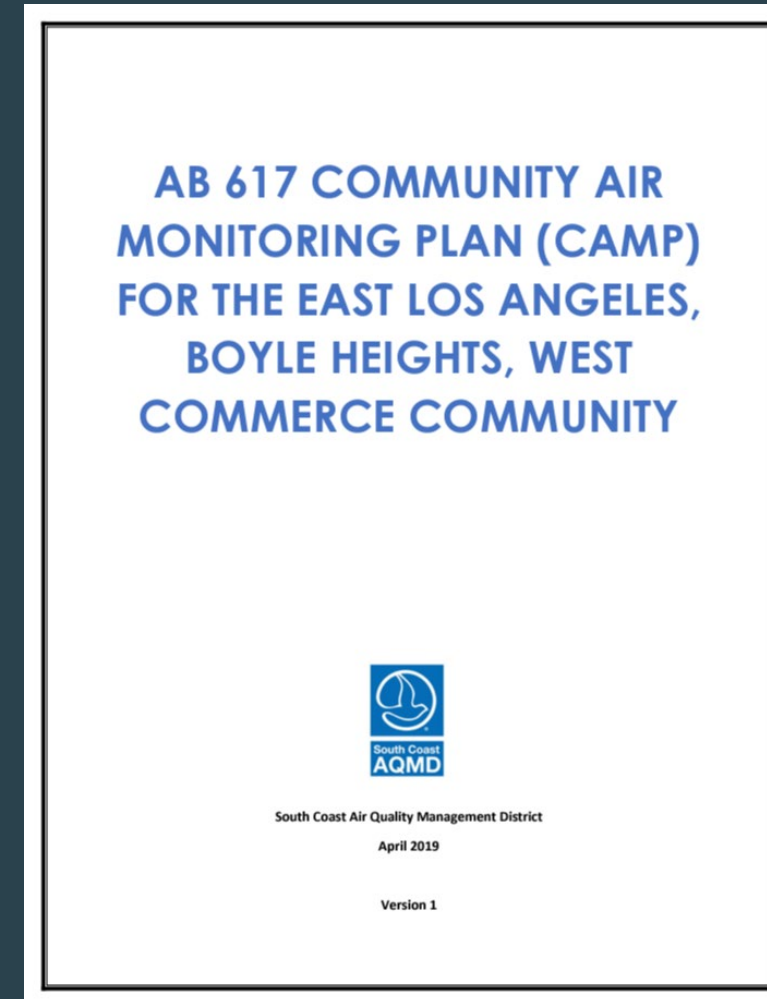
Reduce Exposure

+

Reduce Emissions

# What is a CAMP?

- Identifies air monitoring strategies to characterize emissions from air quality priorities established by the CSC
- Describes air monitoring instruments and approaches to measure air pollutants relevant to communities
- Defines community air monitoring efforts



# Outreach & Engagement

Community Outreach, Relations & Engagement (CORE)



# CSC Contributions

- ▶ Identified air quality priorities and CERP objectives
- ▶ Prioritized funding for community-identified projects
- ▶ Led Working Teams
- ▶ Collaborated with air district and community members
  - ▶ C3POs / Community Tours
  - ▶ AB 617 Retreats
  - ▶ All CSC Event







Anuncios

- Actualización de sugerencias
- Actualización de la guía comunitaria

Announcements

- Suggestion Box
- Community tour update

Announcements

- Suggestion Box
- Community tour update

# CSC Refresher

# How is the community involved?

## Community Steering Committee (CSC)



**Residents &  
Community  
Leaders**

**Community  
Organizations**

**Business**

**Industry**

**Government  
Agencies**

**Community  
Stakeholders**



# CSC Role in CERP & CAMP

- ▶ Feedback, input, guidance
- ▶ Community air quality data to identify sources
- ▶ Community concerns about emission sources & air pollution challenges
- ▶ Implementation strategies
- ▶ Community outreach approaches
- ▶ Metrics for progress

# Charter

- ▶ Each community has their own charter
- ▶ Requirements include:
  - ▶ Attend scheduled CSC Meetings
  - ▶ Absences
  - ▶ Spanish language interpretation
    - ▶ Additional language interpretation may be requested
  - ▶ Agenda Topics for CSC Meetings

# CSC Participation

- ▶ CSC members are requested to:
  - ▶ Be punctual, respect time limits for agenda items
  - ▶ Communicate openly and directly
  - ▶ Be courteous, listen attentively and be respectful of other points of view.
  - ▶ Participate fully in the group exchange
  - ▶ Be flexible and open to change and new ideas

# Stipends

- ▶ Seventy-five dollars (\$75) per regular CSC meeting
- ▶ To be eligible to receive a CSC stipend, a person must meet the following criteria:
  - ▶ Be a current primary or alternate member
  - ▶ Reside within the Community Boundary of the CSC for which they are serving at the time of the CSC meeting
  - ▶ Complete and submit the appropriate forms:
    - ▶ Form W-9, CA Form 590,
    - ▶ Stipend Qualification Declaration Form,
    - ▶ AB 617 Community Steering Committee Interest Form
  - ▶ Primarily represent community residents (including local tribes) when serving on the CSC
    - ▶ Members who primarily represent a business, business organization, labor union, community organization, university, school, hospital, utility, govt. agency, elected officials, or neighborhood councils are not eligible to receive a stipend

# Schedule

(Mostly Thursdays)

- ▶ **ECV**, quarterly, 5-7 pm
- ▶ **ELA**, quarterly, 4-6 pm
- ▶ **SBM**, quarterly, 5-7 pm
- ▶ **SELA**, quarterly, 4-6 pm
- ▶ **SLA**, quarterly, 4-6 pm
- ▶ **WCWLB**, quarterly, 2-4 pm

2025 Calendar  
coming soon





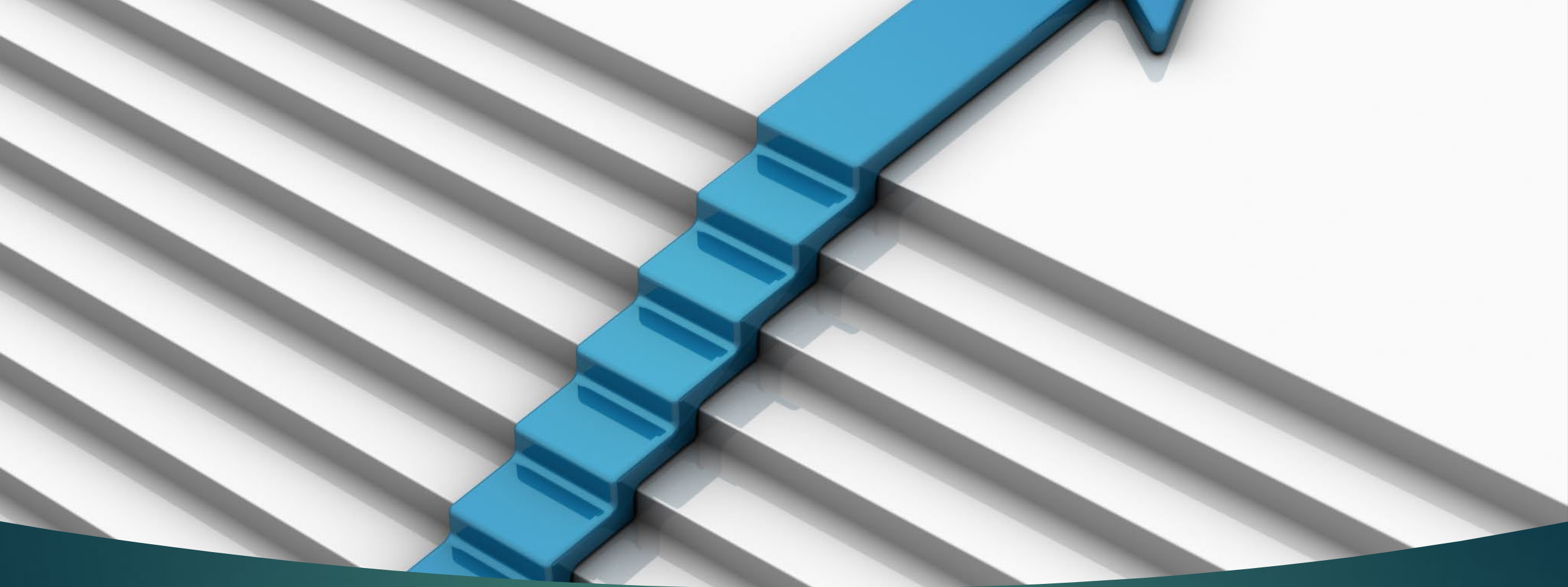
# CSC Expectations





# What are your expectations?

- ▶ Air District?
- ▶ Fellow CSC members?
- ▶ Other AB 617 Communities?
- ▶ CARB?



Next Steps

# What's Next for AB 617?

Continue implementing CERP and CAMP commitments



Continue collaborating with community stakeholders



Streamline CERP data communication



Continue supporting CARB's AB 617 guidance document  
(Blueprint 2.0)



Seek additional AB 617 funding



Public Comment

# Thank you!

More information on AB 617:  
[www.aqmd.gov/AB617](http://www.aqmd.gov/AB617)

Email: [AB617@aqmd.gov](mailto:AB617@aqmd.gov)

Follow us [@SouthCoastAQMD](https://twitter.com/SouthCoastAQMD)

