

Figure 1: Measured and predicted vapor pressures of select compounds at 25°C. Compounds labeled with (mod) were predicted using US EPA EPI Suite v4.1 MPBPVP. Measured values were obtained from the experimental database in EPI Suite v4.1. Uncertainty bounds were assigned to the modeled values. The uncertainty bounds are a function of modeled vapor pressure. Note: the uncertainty bounds capture two standard deviations from the mean of the difference between the measured and modeled data from a training set of 3037 compounds.

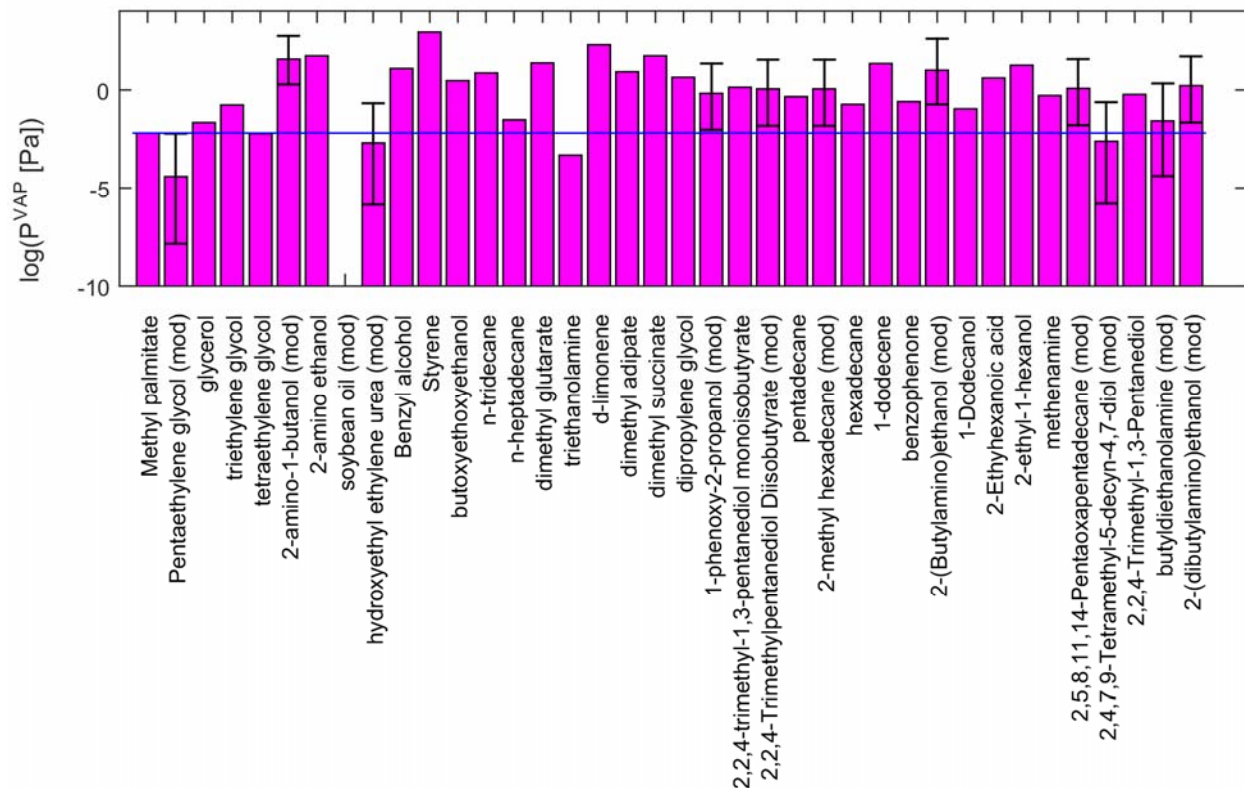


Figure 2: Measured and predicted vapor pressures of select compounds at 25°C. Compounds labeled with (mod) were predicted using US EPA EPI Suite v4.1 MPBPVP. Measured values were obtained from the experimental database in EPI Suite v4.1. Uncertainty bounds were assigned to the modeled values. The uncertainty bounds are a function of modeled vapor pressure. Note: the uncertainty bounds capture two standard deviations from the mean of the difference between the measured and modeled data from a training set of 3037 compounds.

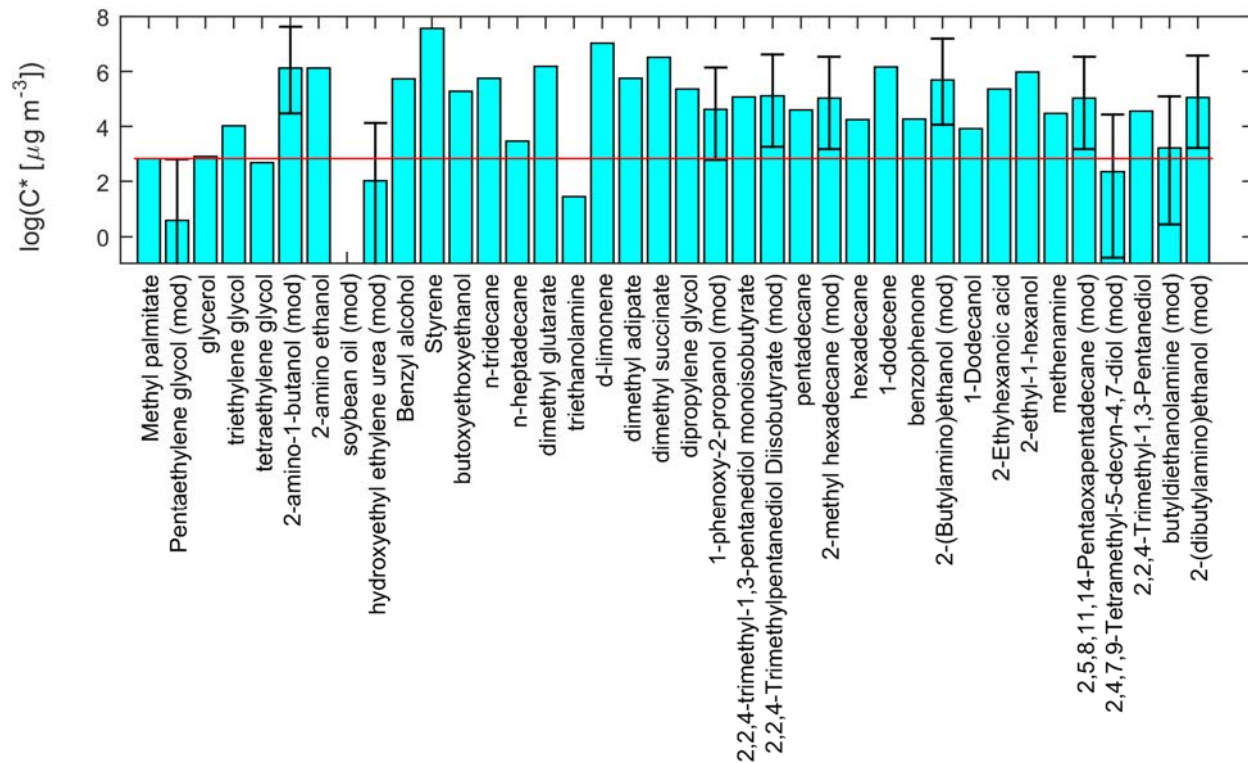


Figure 3: Measured and predicted saturation concentrations of select compounds at 25°C. Compounds labeled with (mod) were predicted using US EPA EPI Suite v4.1 MPBPVP. Measured values were obtained from the experimental database in EPI Suite v4.1. Uncertainty bounds were assigned to the modeled values. The uncertainty bounds are a function of modeled saturation concentration. Note: the uncertainty bounds capture two standard deviations from the mean of the difference between the measured and modeled data from a training set of 3037 compounds.