

# South Coast Air Quality Management District

**Stakeholder Working Group Meeting  
April 1, 2008**

**Proposed Rule 2301  
Control of Emissions from New or  
Redevelopment Projects**



# Summary of Mitigation Approaches Discussed (Recap)

# Approach #1

---

- On-site Quantifiable Mitigation Measures Followed By On-site Non-quantifiable Measures With Infeasibility Finding Off-ramp
  - Maximum Technically Feasible/Cost-effective On-site Controls

# Approach #2 (SJVUAPCD - Like)

---

- On-site Quantifiable Mitigation Measures Followed By Fees (or Off-site Reduction Projects)
  - Specified Emission Reduction Target (Emission Threshold or Percent Reduction)

# Approach #3 (SMAQMD – Like)

---

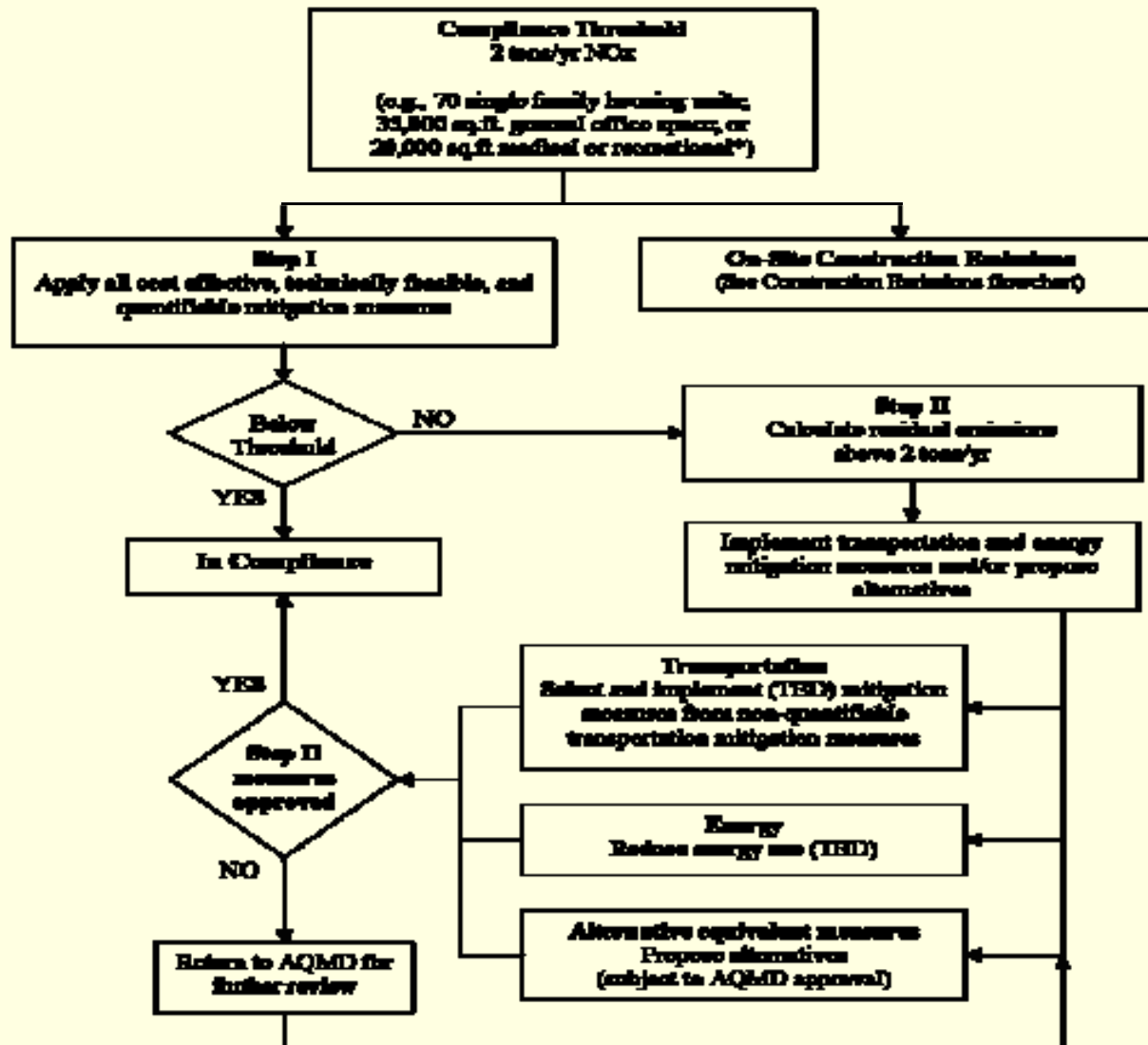
- Emission Reduction With a Mix of Quantifiable and Non-Quantifiable Mitigation Measures With Points (Percent)
  - Percent Based Threshold

# Strategy Programs

---

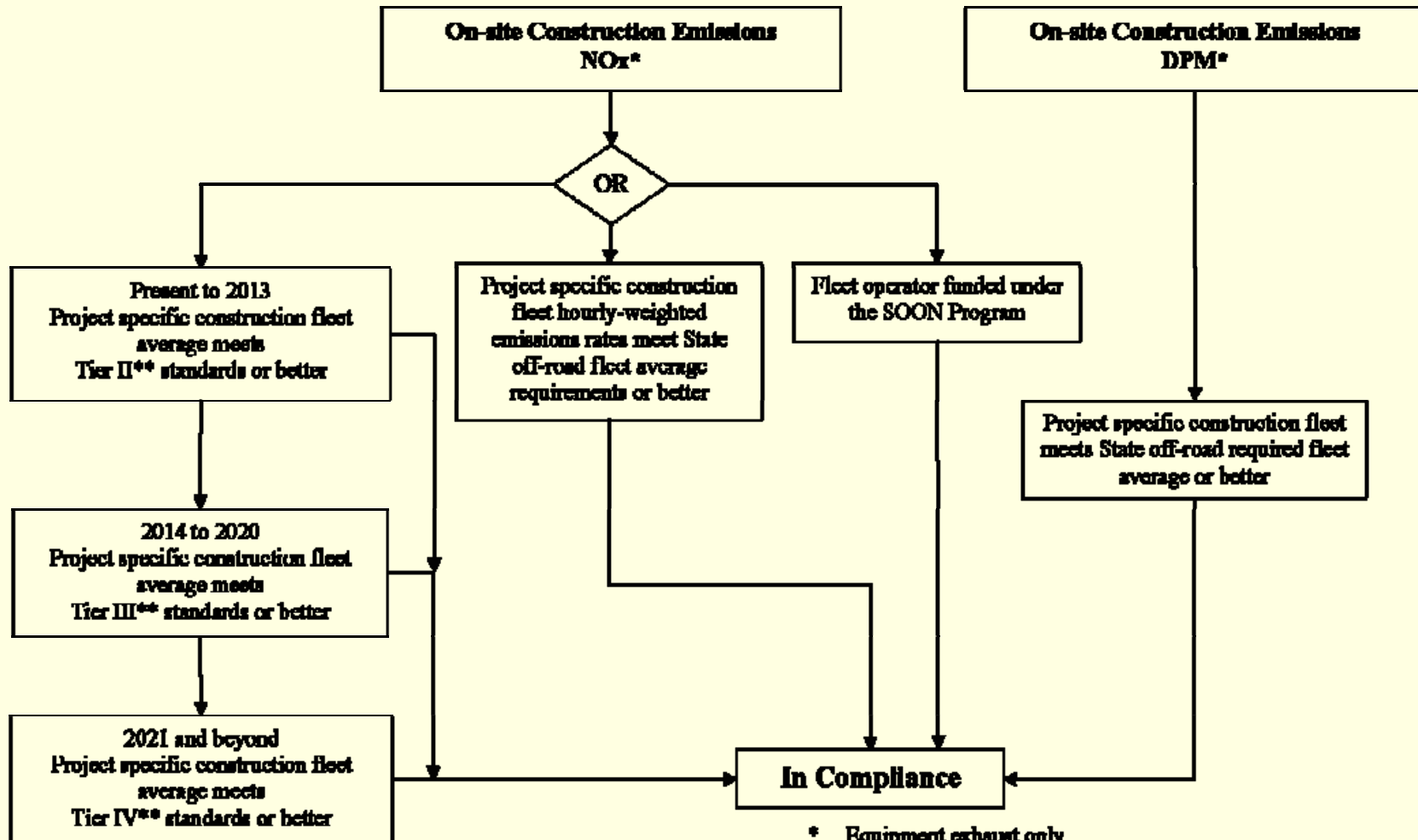
- Operational Emissions
- On- Site Construction Emissions

# Operational Emissions Flowchart



\* Project examples, for additional examples see PE2901 concept summary. These numbers are subject to further review.

# Construction Emissions Flowchart



\* Equipment exhaust only

\*\* CARB In-Use Off-Road Diesel-Fueled Fleets emission standards, including the applicable exemptions



# Next Steps

---

- Key Issues
- Case Studies Pending
- Identify tasks for next meeting
- Next meeting?

# AQMD Contact Information

---

- Carol Gomez  
Planning & Rules Manager  
(909) 396-3264  
[cgomez@aqmd.gov](mailto:cgomez@aqmd.gov)
  
- Proposed Rule 2301  
<http://www.aqmd.gov/rules/proposed/2301/index.html>